

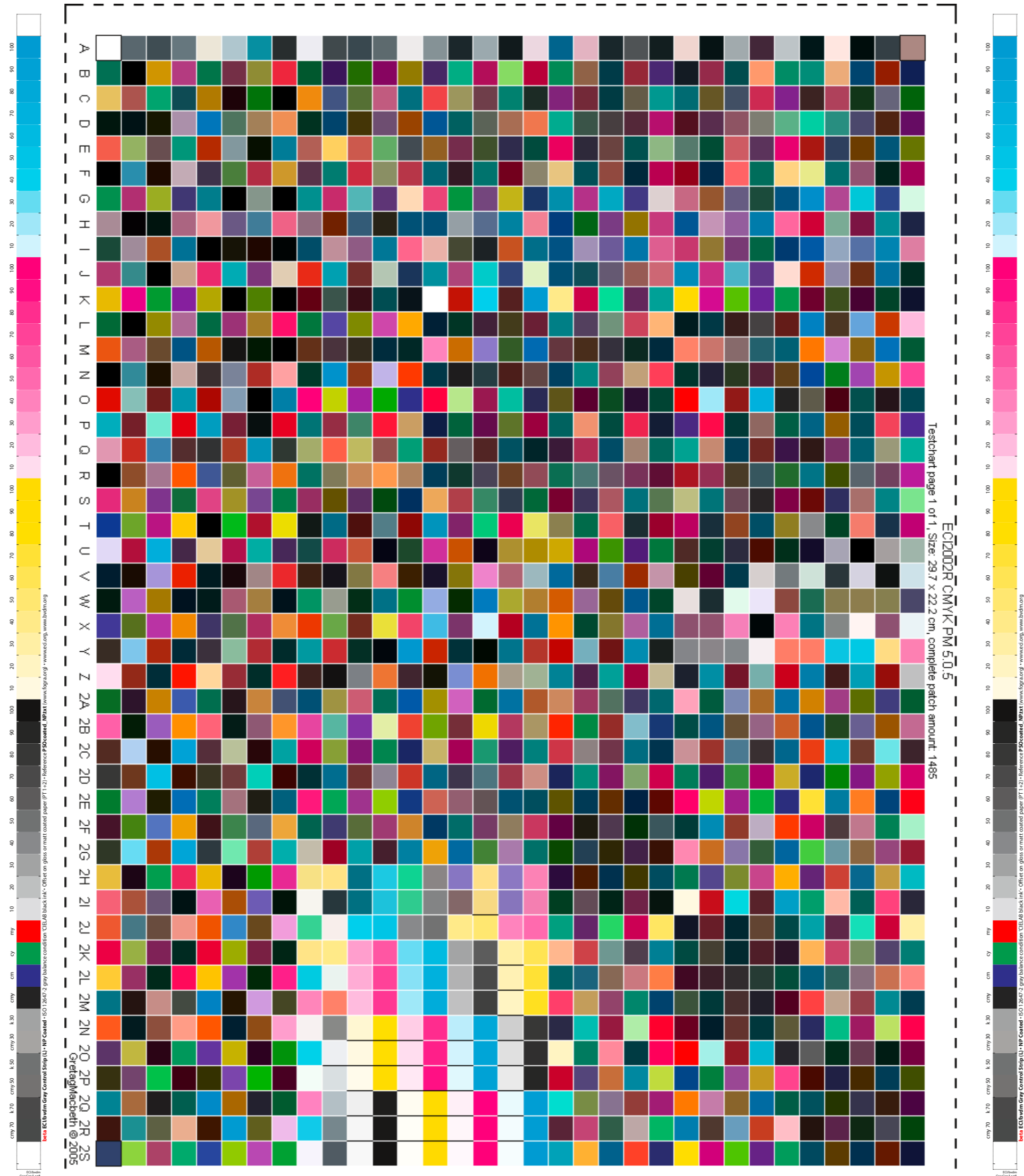
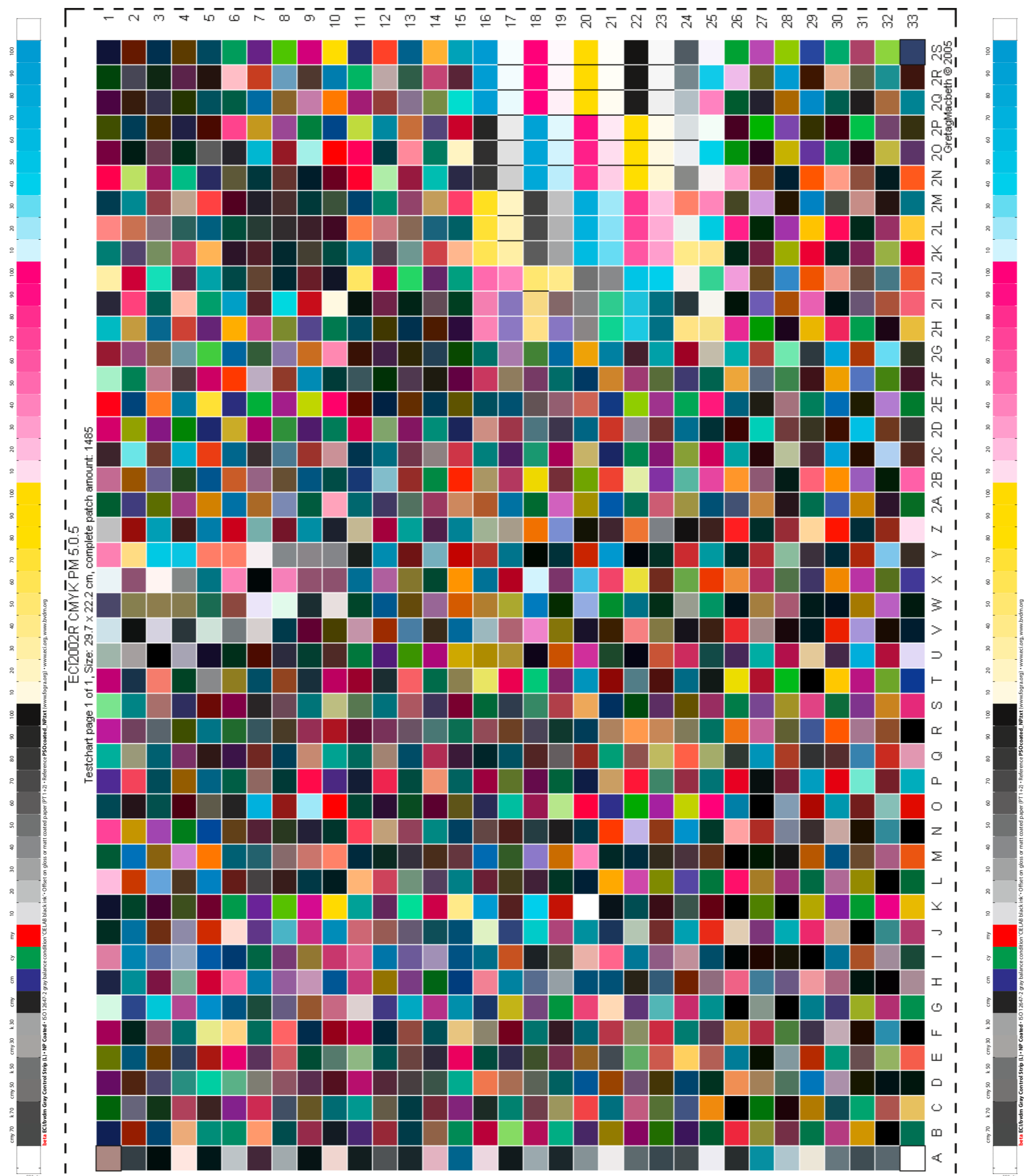
Druckbedingung: **PSO Coated NP beta iso12647 (ECI)**
Testserie nichtperiodische Raster (bvdm/ECI/Fogra) | roman16 bvdm-Referenzbilder

Seite 1



Druckbedingung: **PSO Coated NP beta iso12647 (ECI)**
Testserie nichtperiodische Raster (bvdm/ECI/Fogra) | roman16 bvdm-Referenzbilder

Seite 3



Druckbedingung: **PSO Coated NP beta iso12647 (ECI)**
Testserie nichtperiodische Raster (bvdm/ECI/Fogra) | roman16 bvdm-Referenzbilder

Seite 2



Druckbedingung: **PSO Coated NP beta iso12647 (ECI)**
Testserie nichtperiodische Raster (bvdm/ECI/Fogra) | roman16 bvdm-Referenzbilder

Seite 4



Printing condition: **PSO Coated NP beta iso12647 (ECI)**
Test series non-periodic screens (bvdm/ECI/Fogra) | roman16 bvdm Reference Images

page 2



Printing condition: **PSO Coated NP beta iso12647 (ECI)**
Test series non-periodic screens (bvdm/ECI/Fogra) | roman16 bvdm Reference Images

page 4

